

2015-2016

Pennsylvania State Interagency Coordinating Council for Early Intervention



ANNUAL REPORT SUBMITTED TO THE GOVERNOR



Welcome

Early Intervention
Services and
Supports

Progress Toward
National Early
Childhood Outcomes

Children Served
by County

Funding and
Location Data

State Interagency
Coordinating Council
Members & Resources



Message From the Chair of the State Interagency Coordinating Council

Dear Governor Wolf,

As Chair of the Pennsylvania State Interagency Coordinating Council (SICC) for Early Intervention, I frequently tell policymakers and community members that the most precious resource we have in Pennsylvania is our children. I want to thank you for your unwavering commitment and strong investment in Pennsylvania Early Intervention, which serves our most vulnerable children and families across the state. The SICC has been working hard to keep the community focused on **abilities** and ensuring that all children can be included in early childhood programs. My daughter, Chloe, and her best friend, Alex, who were born with Down syndrome, are both graduates of Pennsylvania's Early Intervention program. We have met with Secretary of Education Pedro Rivera and his staff, as well as Secretary of Human Services Ted Dallas, to reinforce how critical the solid Early Intervention foundation is for a lifetime of inclusion, hope, and success. The future is very bright for countless children and families across our state because of your leadership and robust support for Early Intervention. You have helped to transform Pennsylvania into a national leader for early investment.

Sincerely,

Kurt A. Kondrich, M.Ed.

Parent and State Interagency Coordinating Council Chair

We appreciate Governor Wolf's ongoing leadership as a champion of early learning. Under his governance, we anticipate Pennsylvania's continued progress as a state that goes beyond simply tolerating children of different abilities to one that truly embraces all children as equal participants and contributing members of our society.

Cecilia Lee, Parent and Incoming State Interagency Coordinating Council Co-Chair



Early Intervention Services and Supports in Pennsylvania

Early Intervention in Pennsylvania consists of services and supports designed to help families with children who have developmental delays and disabilities. Early Intervention builds upon the natural learning that occurs during the first few years of a child's life. It is a process that promotes collaboration among parents, service providers, and others significantly involved with the child.

Early Intervention:

- Helps children with disabilities develop and learn to their fullest potential;
- Enhances each family's capacity to meet the developmental needs of their child in the settings where children would be if they did not have developmental delays;
- Respects each family's strengths, values, diversity, and competencies and answers families' questions about their child's development;
- Supports communities to become more aware of the gifts and abilities of all children;
- Helps prevent the need for more and costly intervention in the future;
- Develops Early Intervention practitioners' skills to work collaboratively with families, caregivers, and educators to help children grow and learn.

Early Intervention has given my son the building blocks on which to learn and grow. We greatly benefited from these supports and services, which provided both him and us with the best possible tools for his education, his socialization, and his life.

Mara Sears, Delaware County



The Pennsylvania Office of Child Development and Early Learning administers the Early Intervention program in Pennsylvania.

Vision Statement

The Pennsylvania Office of Child Development and Early Learning supports families and their children, from prenatal through school age, by using data, research, and stakeholder guidance to assure high-quality services.

Mission Statement

The Pennsylvania Office of Child Development and Early Learning provides families access to high-quality services to prepare children for school and life success.

Progress Toward National Early Childhood Outcomes for Children with Disabilities or Developmental Delays

The Federal Office of Special Education Programs requires states to report on child progress by collecting data for three Early Childhood Outcome indicators. Virtually all children in Pennsylvania's Early Intervention program continue to make meaningful progress in these outcome areas (listed in the chart to the right). Many children have closed the developmental gap. Many others will require less or no support and function more independently in school and the community.

Percent of Children who Have Received Early Intervention Services and Have Substantially Increased their Rate of Developmental Growth as Measured by Early Childhood Outcome Indicators

| | Development of Positive Social Relationship Skills | Acquisition and Use of Knowledge and Skills | Use of Appropriate Behaviors to Meet Needs |
|----------------|--|---|--|
| Infant/Toddler | 71.81% | 78.22% | 78.53% |
| Preschool | 86.09% | 88.92% | 86.78% |

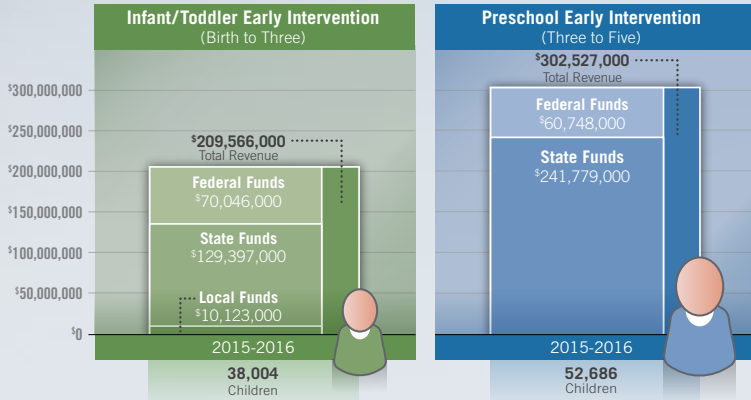
The chart above includes information on the percent of infants, toddlers, and preschoolers who have received Early Intervention services and have made more progress than would be anticipated through typical developmental growth alone. This percentage is based on the change in growth noted by comparing progress data gathered at their entry to and exit from the Early Intervention program.



Our family would not be where and what it is today without the foundation provided for us by Early Intervention. It was not just my son who benefited from his Early Intervention services, but our entire family.

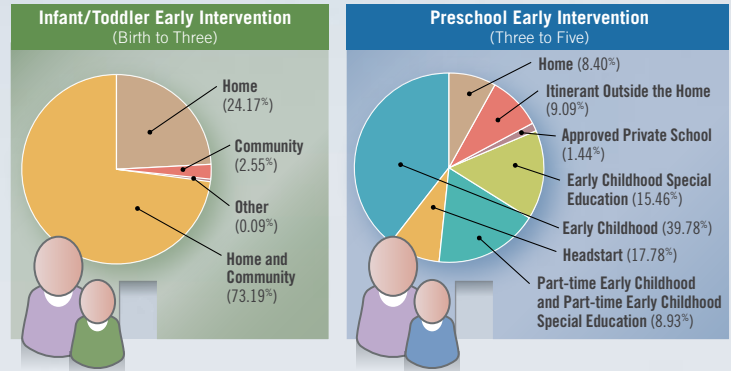
Jessica Capitani, Dauphin County

Funding Allocated for Early Intervention Services



Note:
Federal funds include IDEA and Medical Assistance funds.

Location Where Services are Provided



Note:
Home and community means that the majority of the services are in a combination of home and community settings.

Note:
74.89 percent of preschool children receive their services in inclusive settings (i.e., Home, Early Childhood, Headstart, Part-time/Part-time). For this report, Itinerant Outside the Home are Early Intervention services provided in nonclassroom based, small group, instructional sessions.



Early Intervention began for our daughter a few days after she had recovered from the surgery she had on the day she was born. Because her services started at such a critical time, her ability to achieve has been maximized and her quality of life increased. As a family, we felt less isolated because of the supports we received and the connection to other families that were made.

Jen Schrad, Delaware County

State Interagency Coordinating Council Members

Carl Beck

Director, Bureau of Early Intervention Services, Office of Child Development and Early Learning, Department of Human Services

Amy Powell Bolze, Esq.

Executive Director, Senate Health and Human Services Committee

Cindy Dundas

Manager, Special Programs Bureau of Family Health, Department of Health

Kimberly Early, MSW, LSW

Deputy Director, Office of Policy Development, Department of Human Services

Jill Hrinda-Patten

Parent Representative

Shirley Keith-Knox, LSW, MSW

Deputy Administrator, Dauphin County Mental Health/Intellectual Disabilities Services

Kurt A. Kondrich, M.Ed.

Parent Representative and State ICC Chair

Cecilia Lee

Parent Representative

Carmen Medina

Pennsylvania's Education for Children and Youth Experiencing Homelessness Program, Pennsylvania Department of Education

Suzann Morris

Deputy Secretary, Office of Child Development and Early Learning

Pam Schuessler

Chief Operating Officer, Ken-Crest Children and Family Services

Deborah Shemansky

School District Provider, Hazleton School District

Angela Bertugli Spece

Deputy Director, Office of Legislative Affairs, Department of Human Services

Amy Wible

Head Start Provider

EX-OFFICIO MEMBER

Karen Reed

Program Representative, Developmental Disabilities Council

Resources

CONNECT Information Service

800-692-7288, V/TTY

Pennsylvania Department of Human Services

www.dhs.pa.gov

Pennsylvania Department of Education

www.education.pa.gov

Pennsylvania Department of Health

www.health.pa.gov

Early Intervention Technical Assistance Online Learning Portal

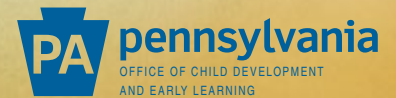
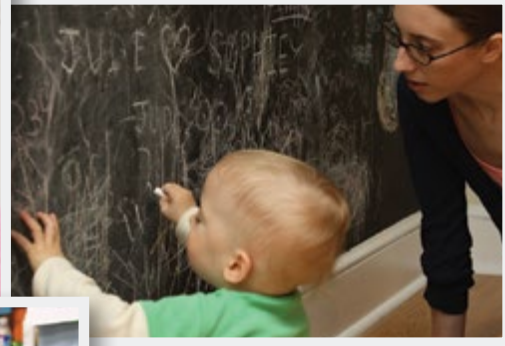
www.eita-pa.org

Parent to Parent of Pennsylvania

www.parenttoparent.org

The SICC is a Governor-appointed council that advises and assists the Departments of Education and Human Services. It ensures that a comprehensive delivery system of integrated Early Intervention programs and services is available in Pennsylvania to all eligible infants, toddlers and young children and their families. The SICC vision for Early Intervention is a system that supports, not supplants, the family's responsibility of caring for their children and supports all children as active participants in the community as children first, not disability first, with attention to necessary adaptations. The SICC supports the concept of inclusion for all children.

Commonwealth of Pennsylvania
Tom Wolf
Governor



Welcome

Early Intervention
Services and
Supports

Progress Toward
National Early
Childhood Outcomes

Children Served
by County

Funding and
Location Data

State Interagency
Coordinating Council
Members & Resources

