

# Converting from EBAE (English Braille American Edition) to UEB (Unified English Braille) with Duxbury

January 17, 2017

3:00 pm – 4:00 pm

Doug Williams

Clyde Gessner



# PaTTAN's Mission

---

The mission of the Pennsylvania Training and Technical Assistance Network (PaTTAN) is to support the efforts and initiatives of the Bureau of Special Education, and to build the capacity of local educational agencies to serve students who receive special education services.

# PDE's Commitment to Least Restrictive Environment (LRE)

---

Our goal for each child is to ensure Individualized Education Program (IEP) teams begin with the general education setting with the use of Supplementary Aids and Services before considering a more restrictive environment.

# PA UEB Implementation Plan: Year 2

Copies of the full draft plan, can be found at:

- PaTTAN's Website, Ed Initiatives, BVI, Resources
- 2016 – 17 K – 3 UEB
- 2017 – 18 K – 7
- 2018 – 19 K - 12

**Input Requested:** What process should be used to ensure that teachers and transcriptionists have received training in UEB? Should there be a certificate on file?

2016-2017: Year 2 – Implementation

Grade	Textbook Implementation	All State and Local Assessments
Grades K-3	All content area textbooks in UEB	State and Local assessments in UEB for grade 3.
Grades 4-12	<p>As a result of extensive research surrounding best practice for braille production and to remain consistent with other producers of braille materials, PaTTAN AIM Center will adopt the American Printing House for the Blind's implementation plan for textbook and braille on demand production. APH's implementation plan as it relates to PaTTAN AIM Center braille production services are as follows:</p> <ul style="list-style-type: none"><li>• Orders for textbooks in subjects using literary braille (i.e., social studies and language arts), not previously transcribed, will be produced in UEB for the 2016-17 school year.</li><li>• Orders for textbooks in technical subjects (i.e., science and mathematics), not previously transcribed, will be produced in UEB and/or UEB with Nemeth Code for the 2016-17 school year.</li><li>• Textbooks previously transcribed will be available in their original codes, following APH's policy of not duplicating previously transcribed textbooks and supplementary materials.</li><li>• Math and Science: Nemeth &amp; English Braille American Edition (EBAE) or Nemeth and UEB</li></ul>	<p>Match textbook options for grades 4-8, and grade 11</p> <ul style="list-style-type: none"><li>• ELA Exam: EBAAE, or UEB</li><li>• Math Exam: EBAAE and Nemeth, or UEB and Nemeth, or UEB</li><li>• Science Exam: EBAAE and Nemeth, or UEB and Nemeth, or UEB</li></ul>

**RATIONALE:** for any new textbooks being produced in braille for the August 2016 school year start will be produced in UEB for all students K-3. Nemeth will continue to be produced for older students.

**Input Requested:** This is a transitional year, which needs to consider individual student readiness to access both the state practice and grade-level exams in the code format utilized by the individual student. State Assessment will need to be provided in same format as instruction. Should the state move to all UEB except for the high school student?

# What happens after you order a Braille Book

---

- We first check our library to see if we have the book.
- If we do not have the book we check the Louie data base at APH
- If they do not have the book we contract with a certified braille transcriptionist to produce the book in braille

# What happens if we have the book in EBAE

- Books before the change were produced mainly by two translation programs
  - Mega Dots
  - Braille 2000
- Most of the Books in AIM are in these formats
- What happens to these books when we have to produce them in UEB

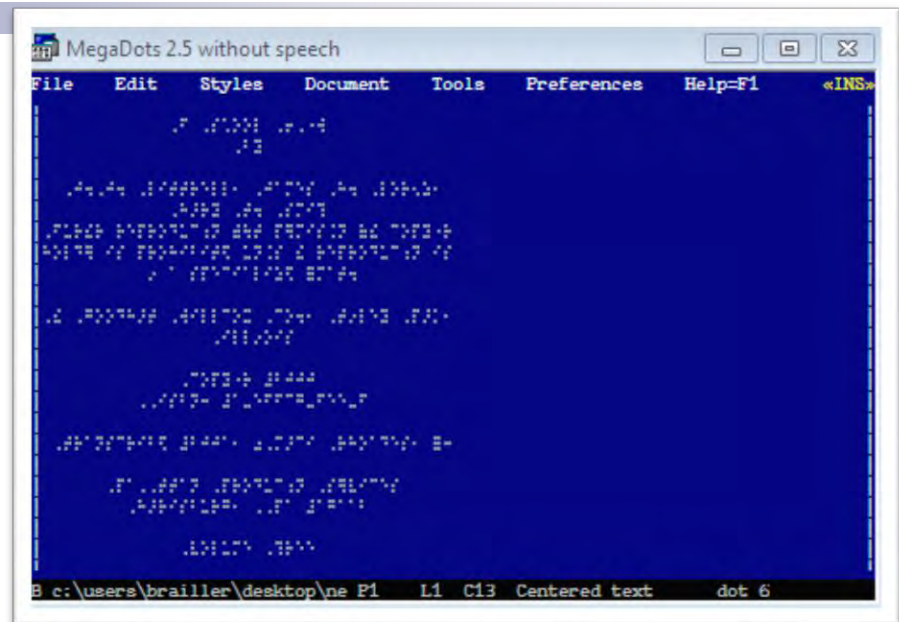
# Why Mega Dots

---

- Mega Dots was used by transcribers to avoid buying Duxbury
- It still worked to produce books
- Must have version 2.5 if you have an earlier version this is a free upgrade
- This works with operating systems as high as Windows 7

# Mega Dots Braille to UEB

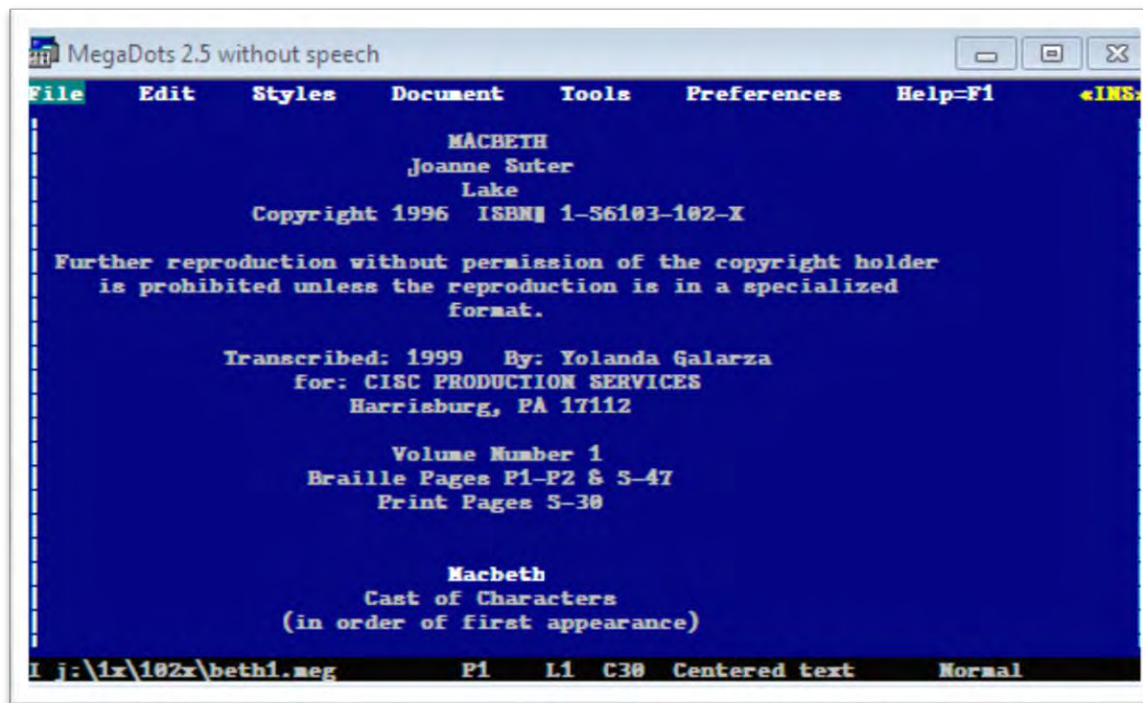
- If your Mega Dots file was saved as a braille file open the file in Mega Dots
- Then translate it with Control key T
- Or go to file and translate





# How to convert from Mega Dots to a .Doc

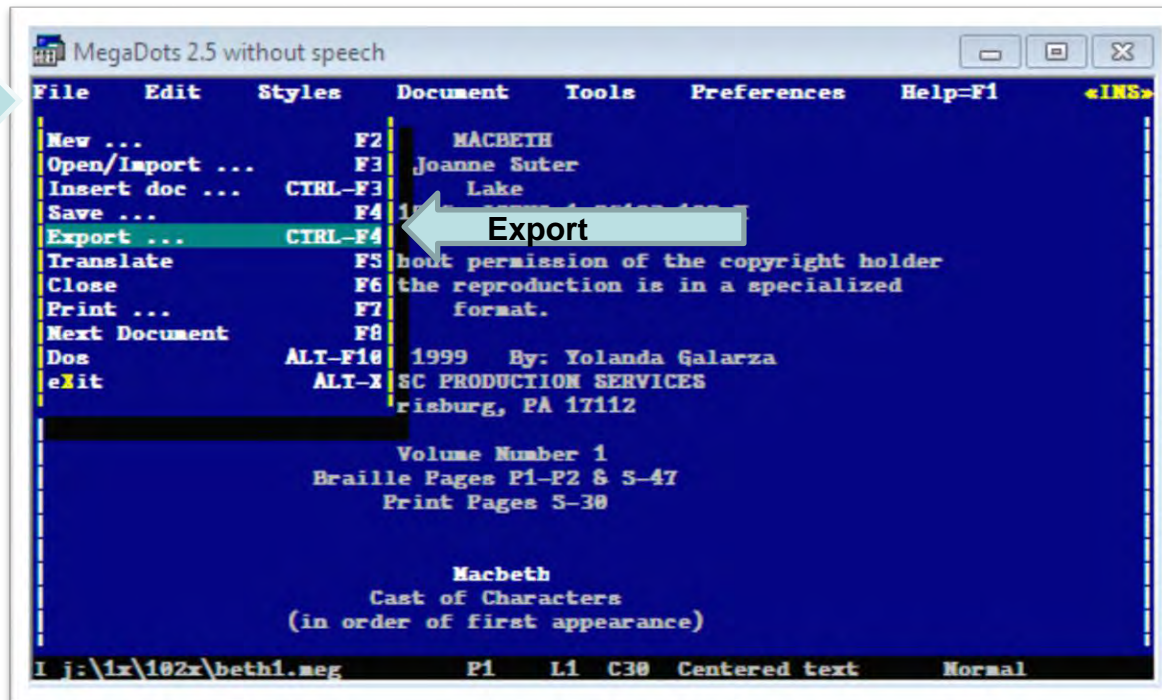
- Mega Dots Document
  - Open the file in Mega Dots
  - It will appear as print in the Mega Dots program



# Select Export

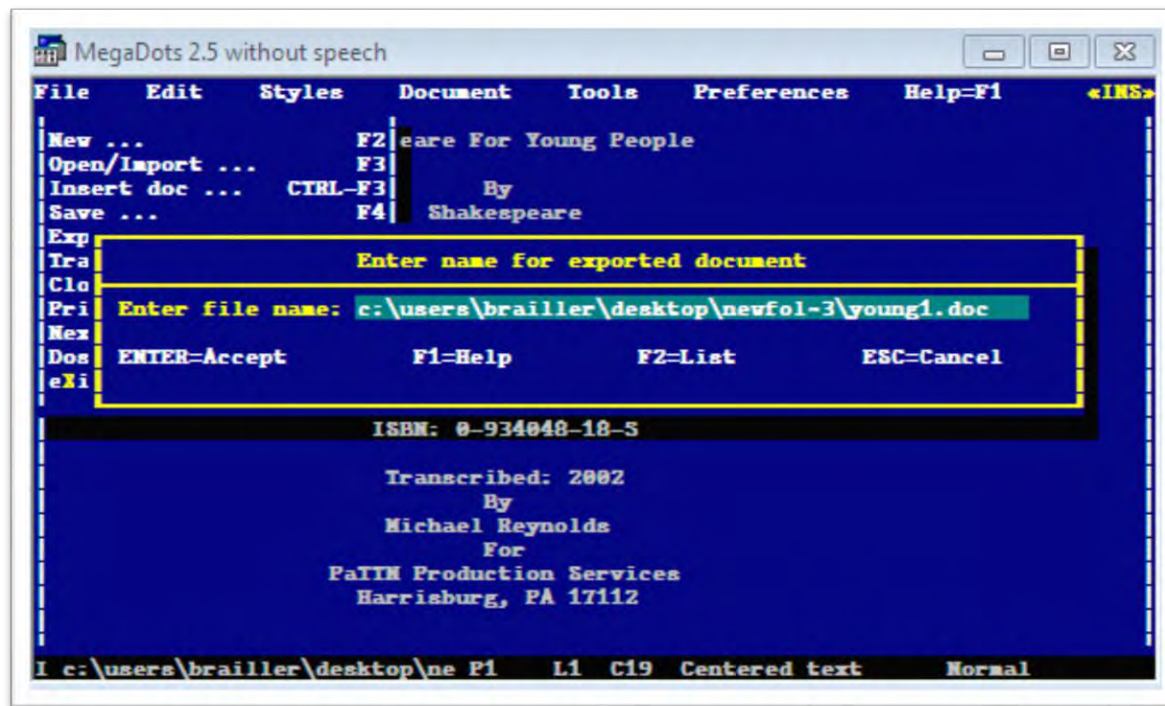
- On the menu bar go to File and select Export

File



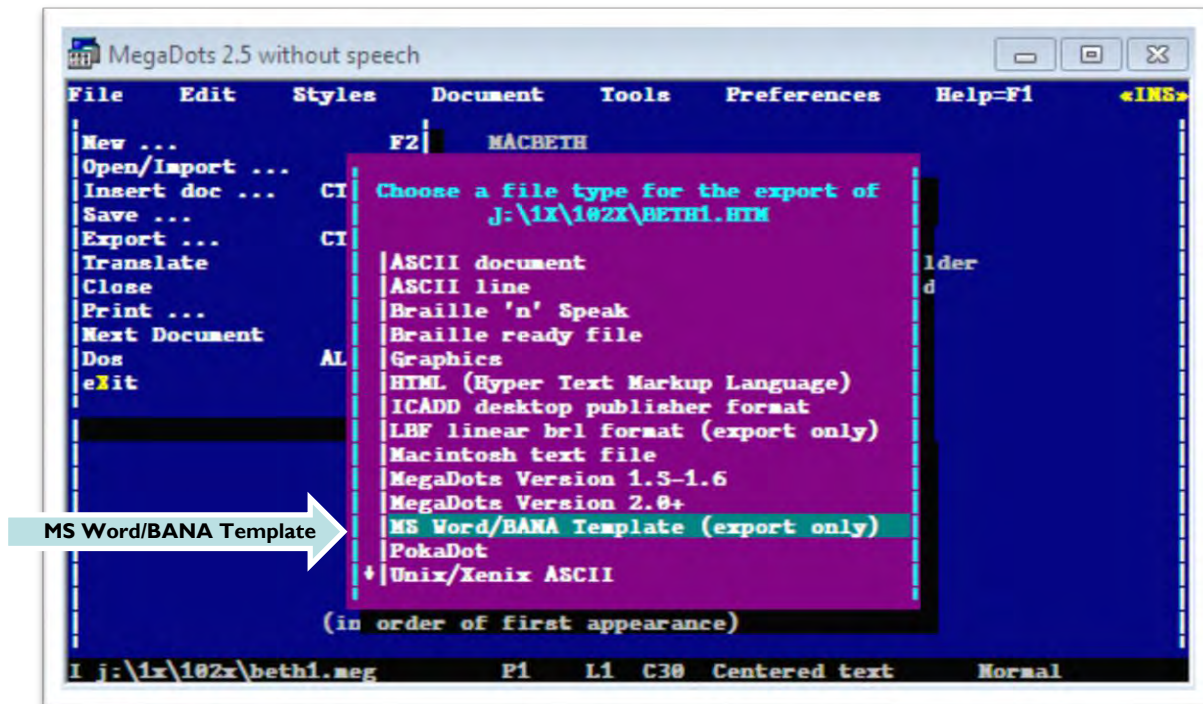
# Ask for file name

- This is where you can change the name, directory or use the same name by entering to get the correct settings make sure the extension is .doc



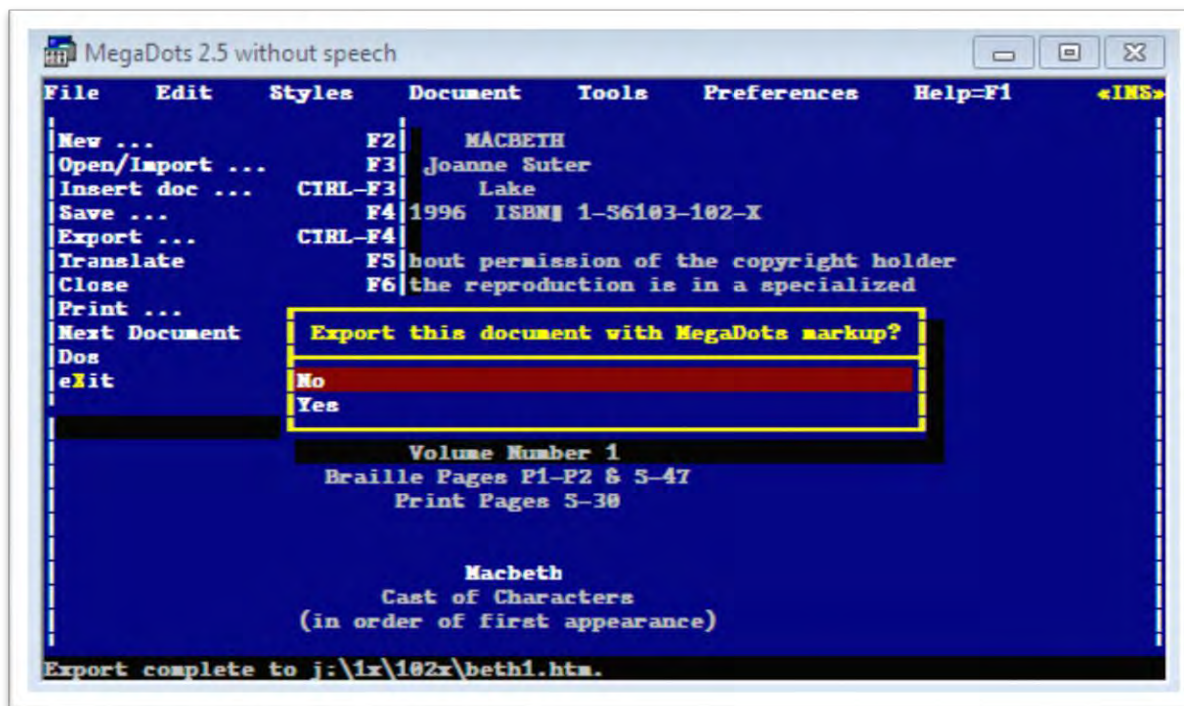
# Change to MS Word BANA

- This brings a list of the format you can export the file as click on ms word bana template



# Export with MD markups

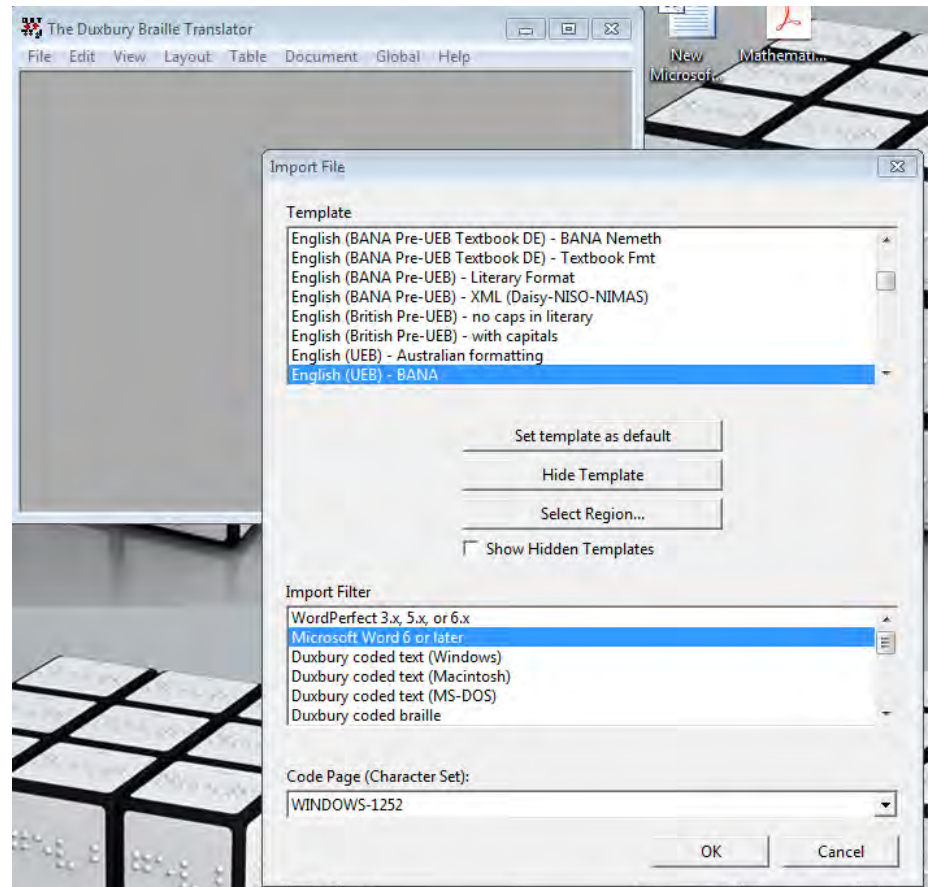
- Export with Mega Dots Markup select **no** this converts it to a HTM file that can be opened with Duxbury.
- No is the default selection you can just press enter





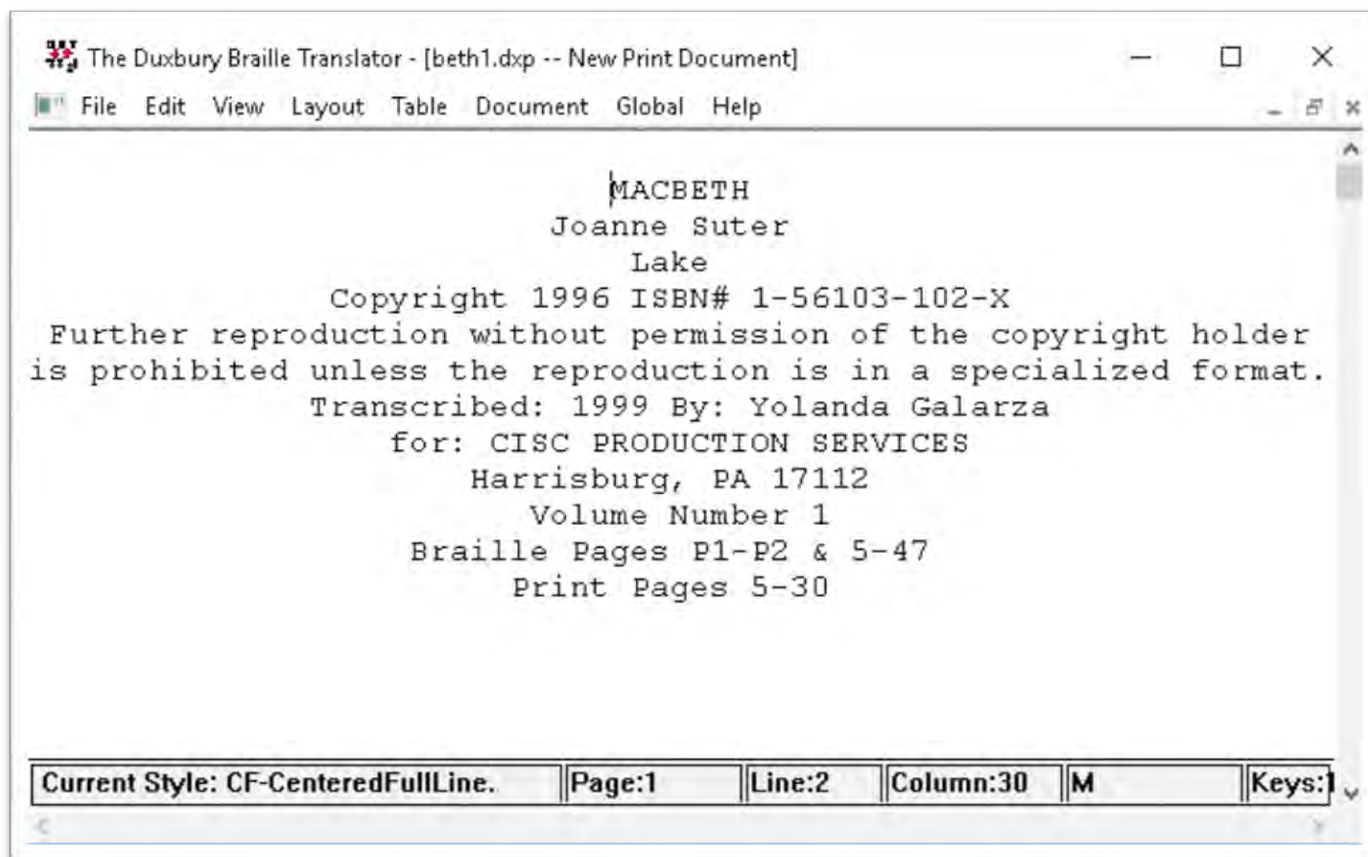
# Open in Duxbury 11.3 or Higher

- The file will appear as a Word File or HTML Document
- Open it with Duxbury
- In the Import File dialogue box select the English (UEB) – BANA
- Import Filter set to Microsoft Word 6 or later



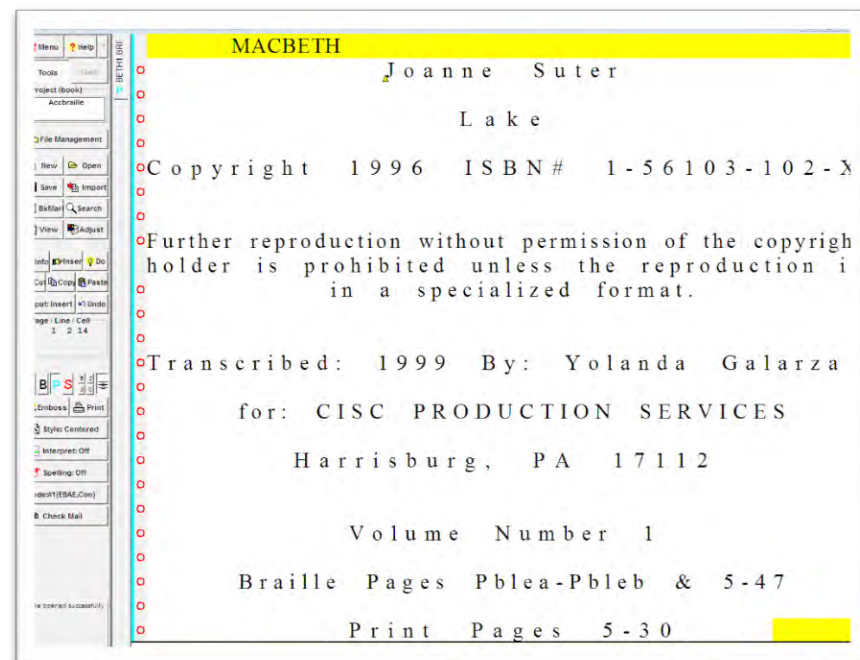
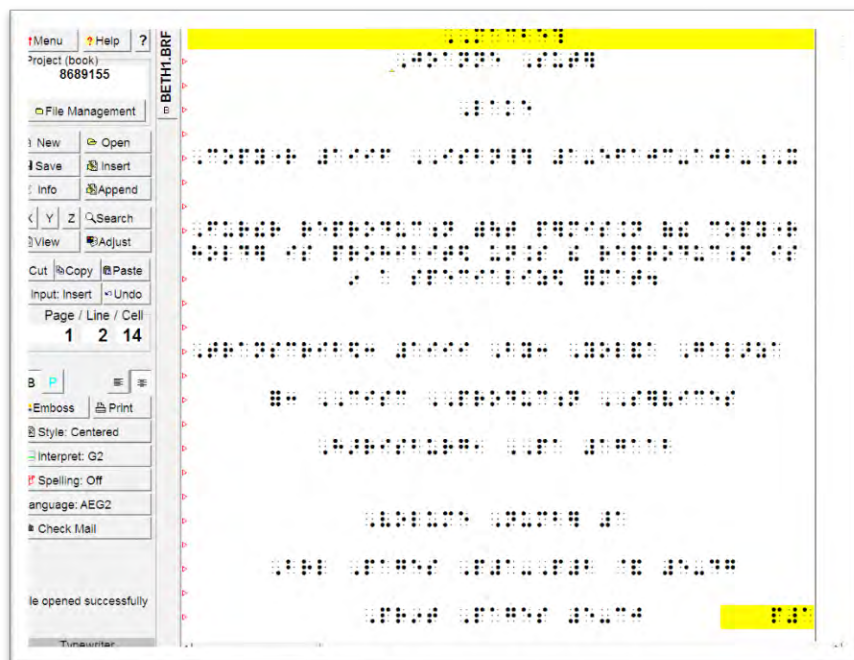
# Formatted Document in Duxbury

- Document is ready in Duxbury to be proofed for formatting and translated to braille.



# Braille 2000 to Duxbury

- Braille 2000





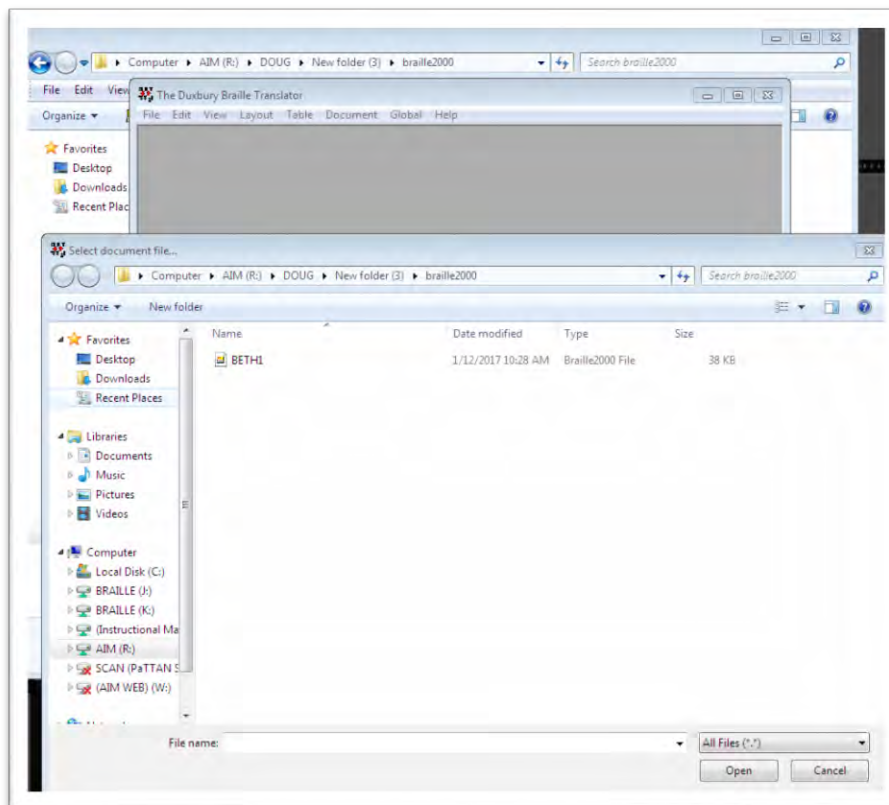
# BRL 2000 to Duxbury

---

- Braille 2000 is inconsistent in translating from EBAE to UEB using V2 Beta
- We have had some success with opening old Braille 2000 files in Duxbury 11.3 or higher
- Like all braille translation from EBAE to UEB proofing the file should be done before production.

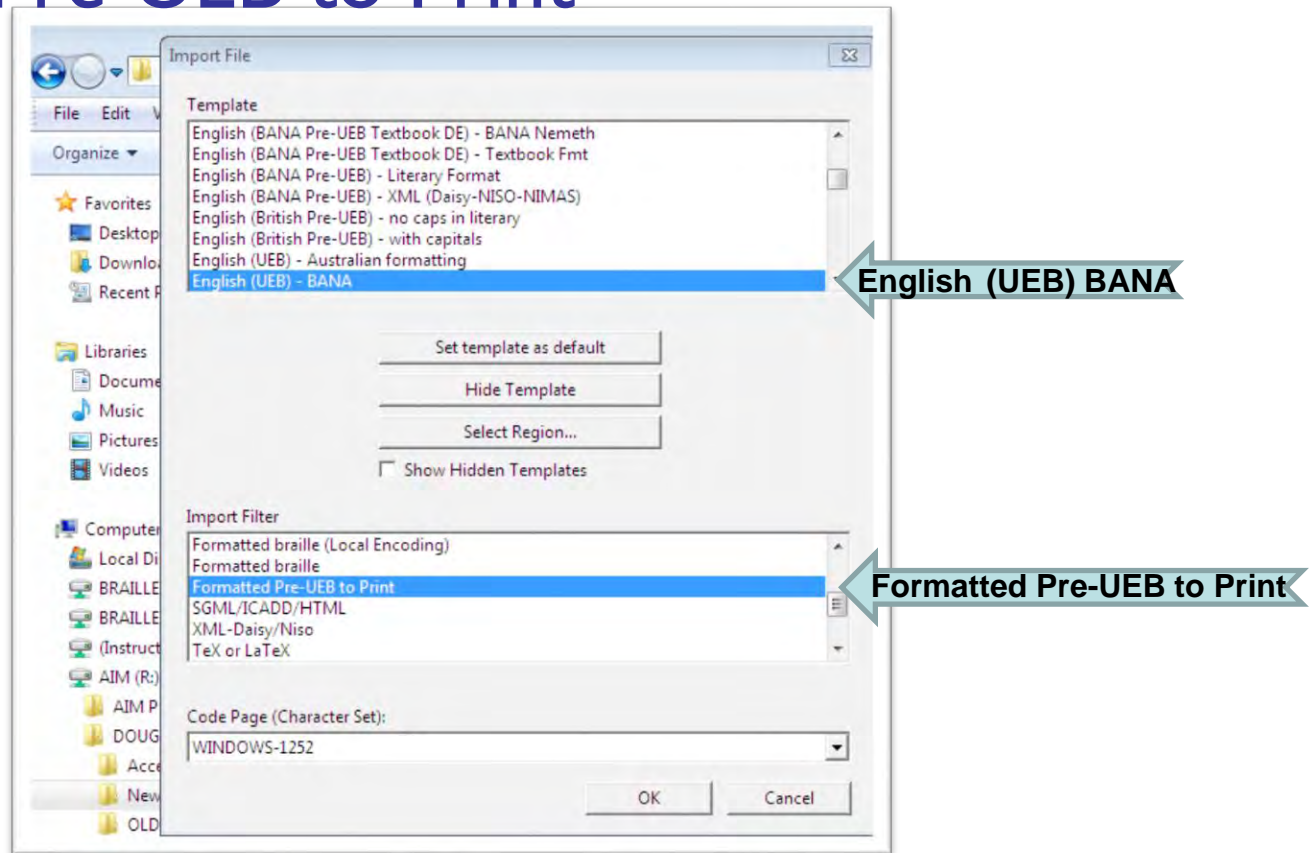
# BRL 2000 to Duxbury

- Open the Braille 2000 document in Duxbury
- It will be identified a BRF file.



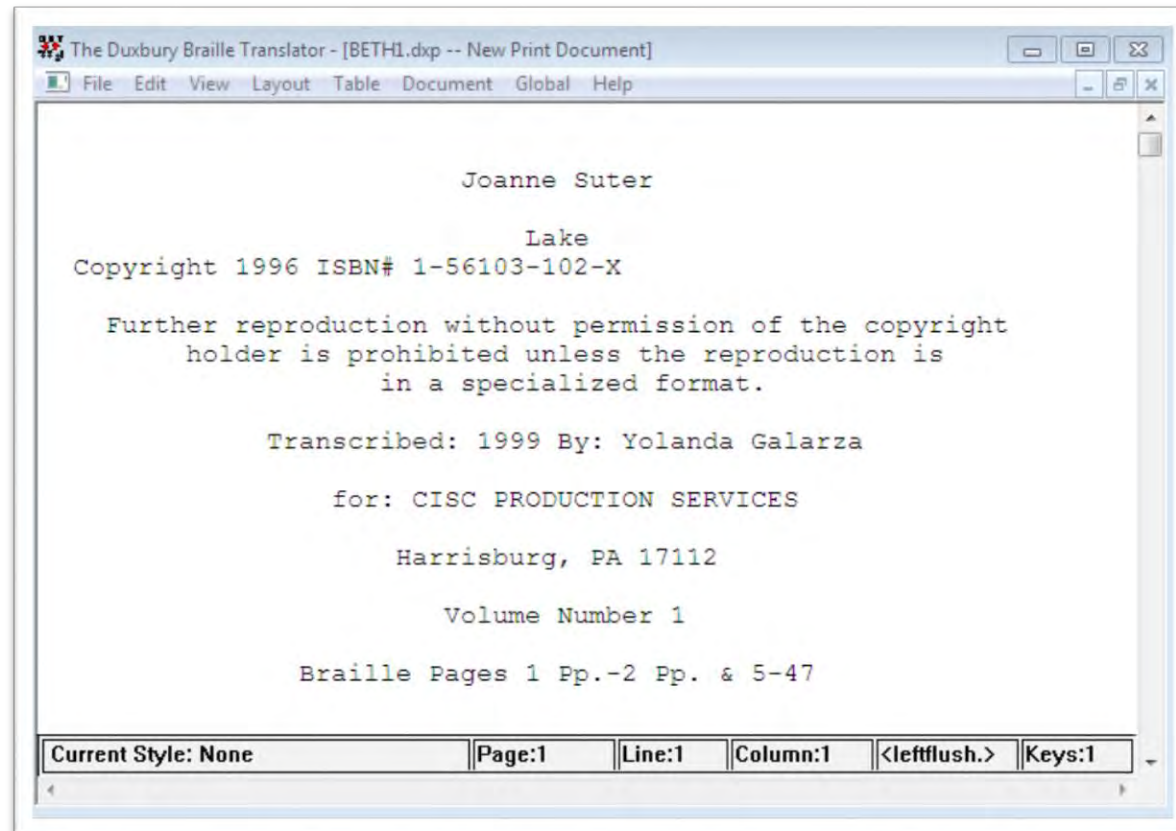
# Brl 2000

- Select the English(UEB) - BANA Template
- Format Pre-UEB to Print



# Braille 2000 to Dux complete

- Now can be translated into braille and embossed



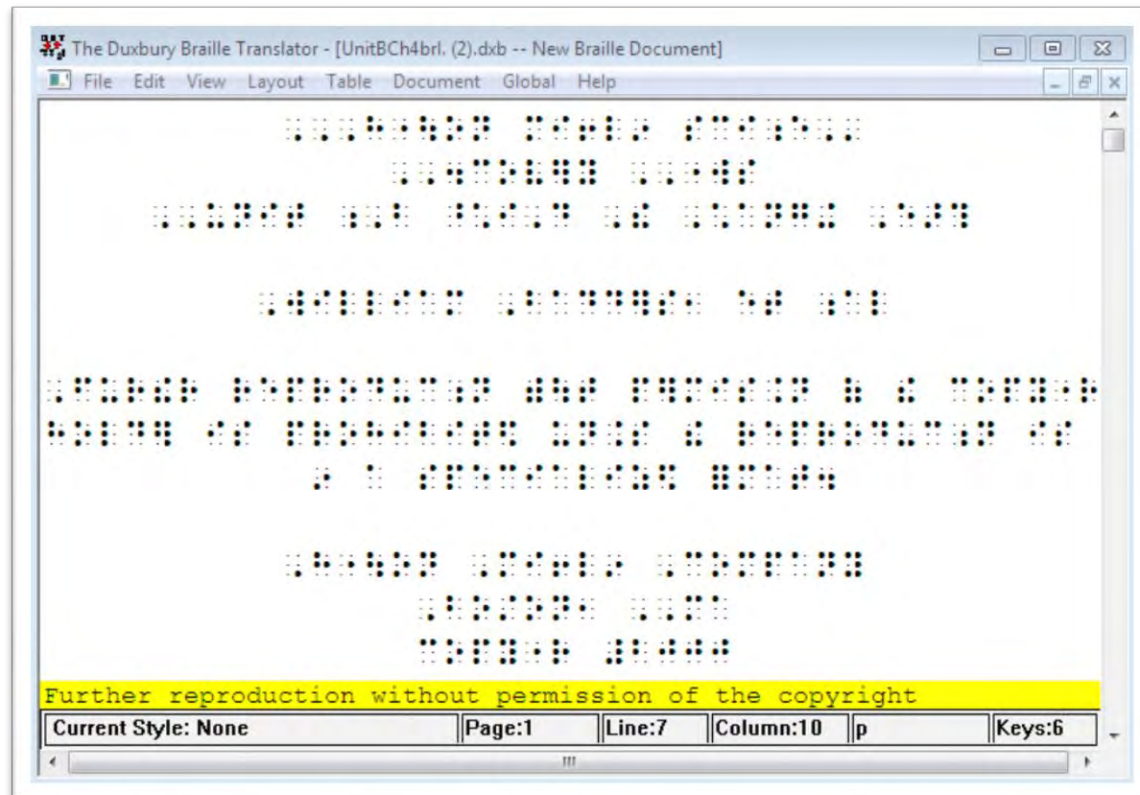
# EBAE to UEB in Duxbury

---

- Not as easy as it seems
- If file appears as Duxbury braille you have to translate it to Duxbury print
- All of these programs save into the correct format and exit the program
- This will allow you to open and put the text into the proper format

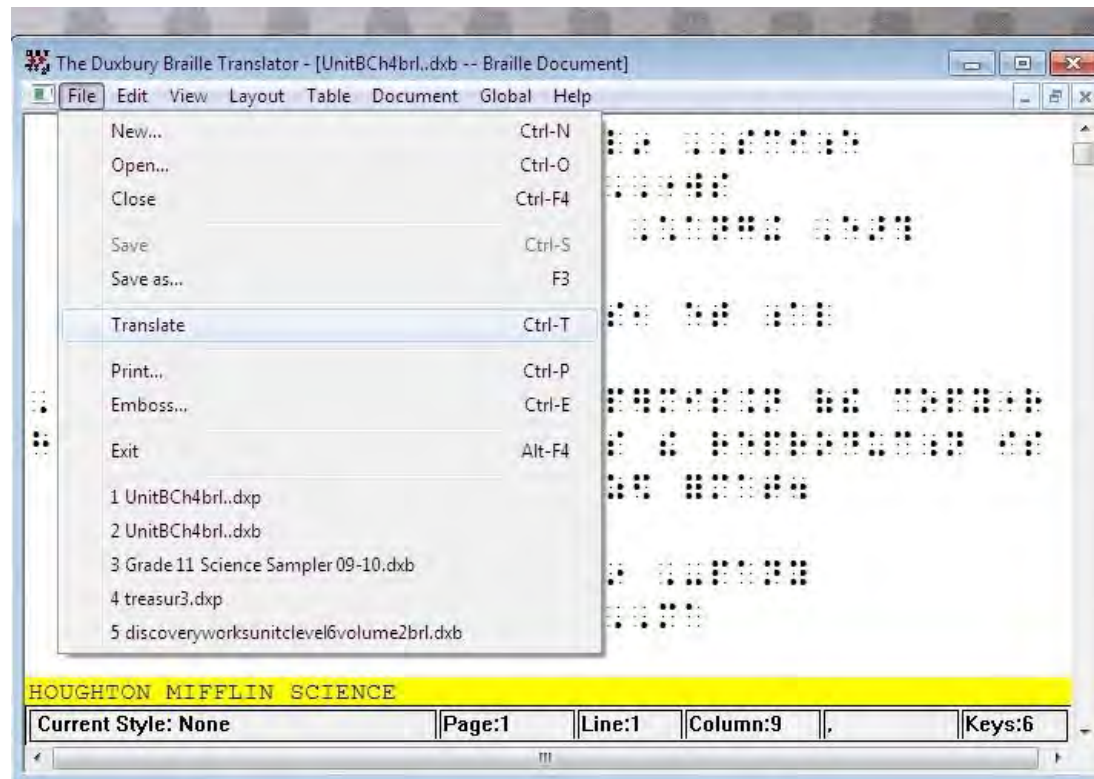
# EBAE to UEB in Duxbury

- If the file is in Duxbury braille format translate it back to Duxbury text



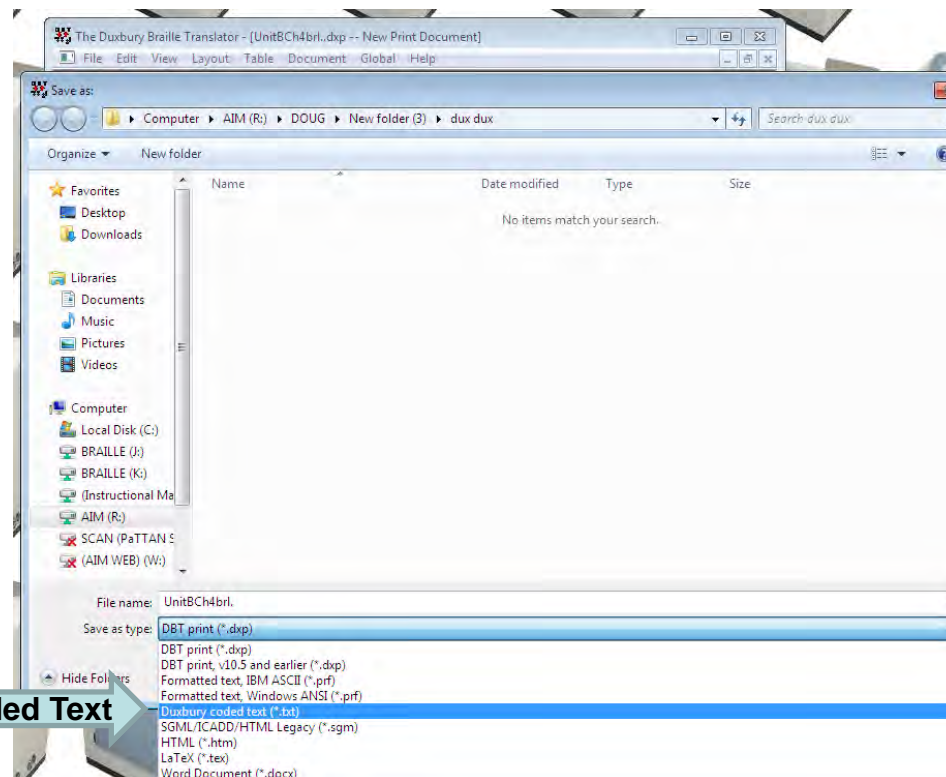
# EBAE to UEB in Duxbury

- Go to file and translate or use control + T



# EBAE to UEB in Duxbury

- Once in Duxbury print you will have to save as Duxbury formatted text



**Duxbury Coded Text**



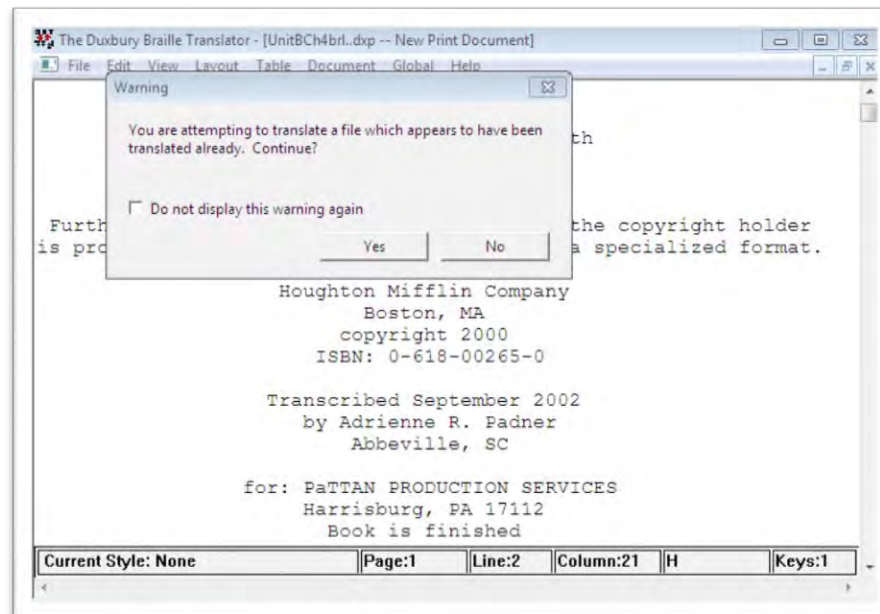
EBAE to UEB in Duxbury

---

At this point  
exit Duxbury

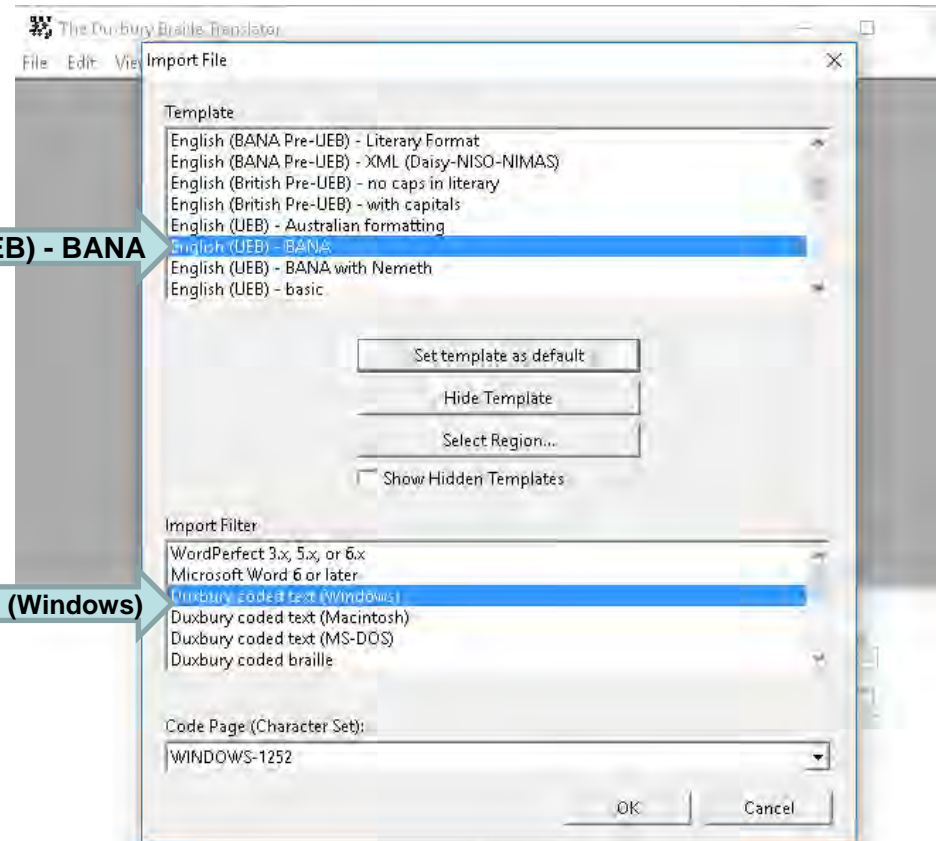
# EBAE to UEB in Duxbury

- If you did not exit Duxbury and reopen the file you saved as Duxbury coded text this message will appear



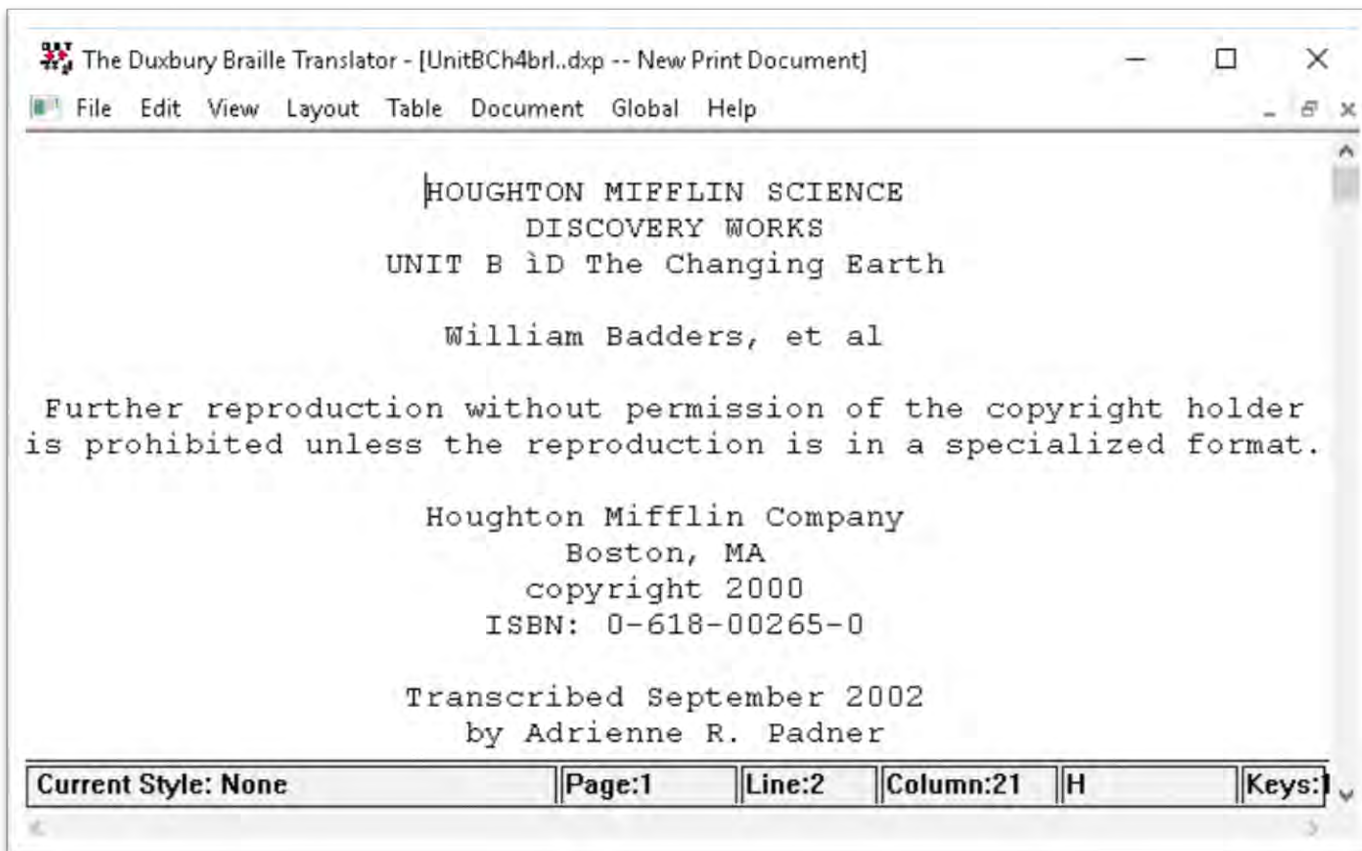
# EBAE to UEB in Duxbury

- Re-open Duxbury and open the Duxbury formatted text file you saved.
- Select English (UEB) BANA template
- Duxbury coded text (windows)



# EBAE to UEB in Duxbury

- Your file is now ready to translate into UEB



# Considerations When Making EBAE to UEB

---

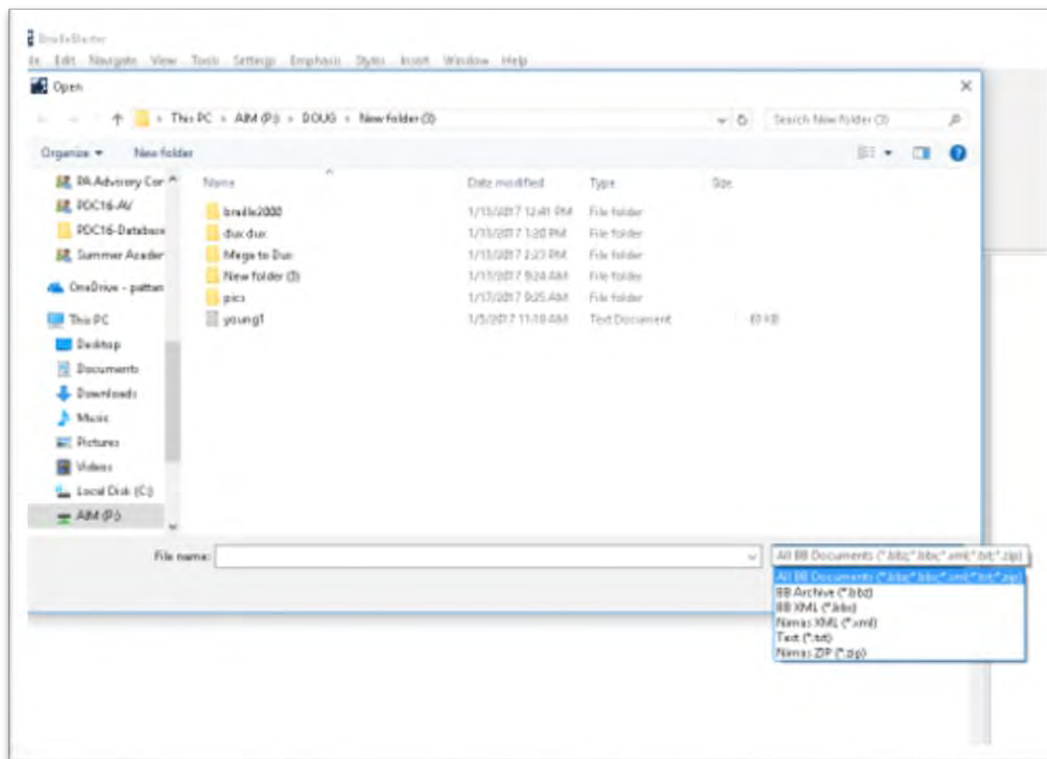
- Depending on the format that the file was saved in sometimes this will not work
- Closing and reopening the programs will allow for a clean attempt to translate
- Currently we are not doing this with Math and Scientific notation
- This will help you reestablish your libraries

# Braille Blaster

- Braille Blaster is a braille translation and embossing program
- It is currently in Beta testing
- You can get a free copy of the software by applying to be a Beta Tester
- You can go to <http://www.aph.org/brailleblaster/>
- Or google APH Braille Blaster

# Braille Blaster Formats

- Formats in Braille Blaster form .BBZ and BBX
- .XML .TXT and Nimas Zip



# Braille Blaster





# Contact Information

[www.pattan.net](http://www.pattan.net)



Douglas Williams

Ed Consultant PaTTAN

Harrisburg

[dwilliams@pattan.net](mailto:dwilliams@pattan.net)

717-901-2224

Clyde Gessner

Lead Braille Technician

PaTTAN's AIM Center

[cgressner@pattan.net](mailto:cgressner@pattan.net)

717-901-2218

**Commonwealth of Pennsylvania**

Tom Wolf, Governor