

***MOBILIZING ALL for GREAT RESULTS!***

*Excerpts from the*  
**2004-2007 Operating Plan**  
**Special Education**



***July 19, 2005***

***Governor's Institute for Distinguished Educators***

# Brief Overview of the Special Education Challenge

(continued)

## Nationally...

- ✓ 6 million students receiving Special Education services
  - 11.5% of the public school population
- ✓ Two-thirds (67%) have specific learning disabilities and/or speech/language impairments
- ✓ Most of the approximately 70-80% of the students identified with specific learning disabilities were referred due to reading problems
- ✓ Students receiving Special Education
  - Black/African American (not Hispanic) 9.8%
  - Hispanic/Latino 14.5%
  - White (not Hispanic) 62.3%
- ✓ 2004 Reauthorization of IDEA



# Brief Overview of the Special Education Challenge

(continued)

## In Pennsylvania...

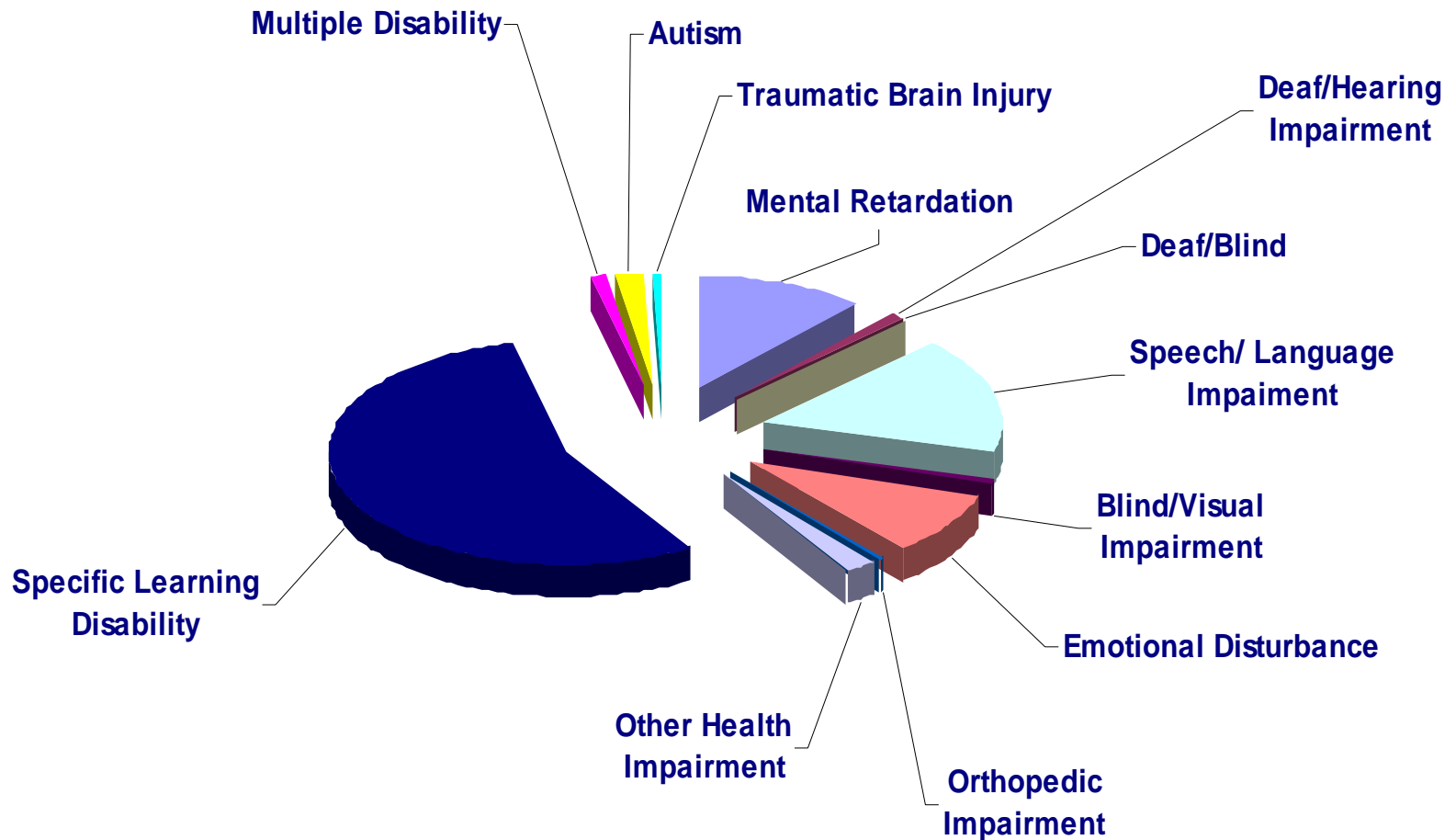
- ✓ **255,797** students with disabilities - **14%** of public school population  
(School-age, 2003-04 revised count, does not include preschool)
  - **2004-05 December 1 count, 262,359 school-age students (14.4%) (6602 more)**
- ✓ 2004-05 Budget: **\$929 million** state funds, plus local and federal funds support services and programs
- ✓ Increase in number of students with Autism and Other Health Impairments
- ✓ Increase in number of students with Specific Learning Disabilities

Percentage of:	<u>Total Enrollment</u>	<u>Special Education</u>
White (not Hispanic)	76%	77%
Black/African American	16%	15%
Hispanic/Latino	5%	5%
Asian	2%	2%
American Indian or Alaskan Native	<1%	<1%

# Students with Disabilities in Pennsylvania

School-age programs

2003-04 school year (does not include preschool)



# Students with Disabilities in Pennsylvania

School-age programs

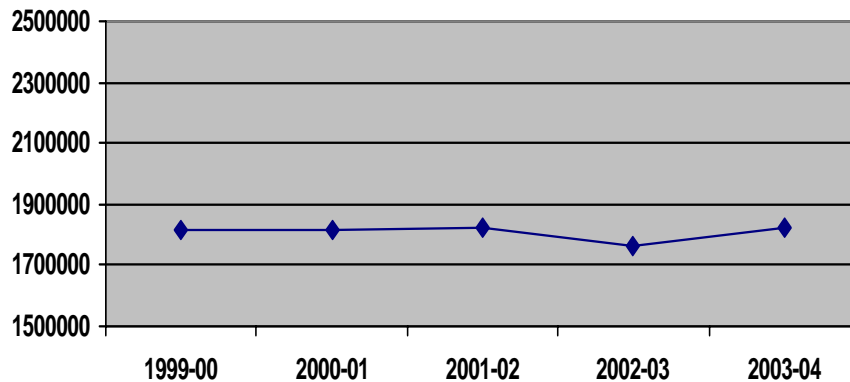
2003-04 school year (does not include preschool)

	Total Students with Disabilities	% of Total Public School Enrollment	% of Special Education Enrollment
Mental Retardation	27,188	1.49%	10.6%
Hearing Impairment including Deafness	2,807	.15%	1.1%
Speech/Language Impairment	41,989	2.31%	16.4%
Visual Impairment including Blindness	1,192	.06%	.5%
Emotional Disturbance	24,461	1.34%	9.5%
Orthopedic Impairment	1,039	.05%	.4%
Other Health Impairment	6,913	.38%	2.7%
Specific Learning Disability	139,988	7.69%	54.7%
Deaf-Blindness	71	.00%	0.0%
Multiple Disabilities	2,771	.15%	1.1%
Autism	6,196	.34%	2.4%
Traumatic Brain Injury	1,182	.06%	.5%
<b>Total</b>	<b>255,797</b>	<b>14.0%</b>	
	<i>(2004-05)</i>	<i>(262,359)</i>	<i>(14.4%)</i>

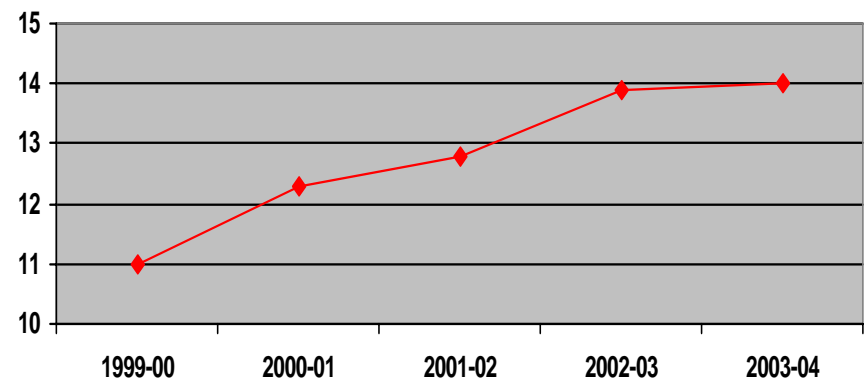
# Students with Disabilities in Pennsylvania

School-age programs (does not include preschool)

School Year	Pennsylvania Public School Enrollment	Special Education % of Public School Enrollment
2003-2004	1,820,136	14.0%
2002-2003	1,766,513	13.9%
2001-2002	1,821,627	12.8%
2000-2001	1,814,311	12.3%
1999-2000	1,816,716	11.9%



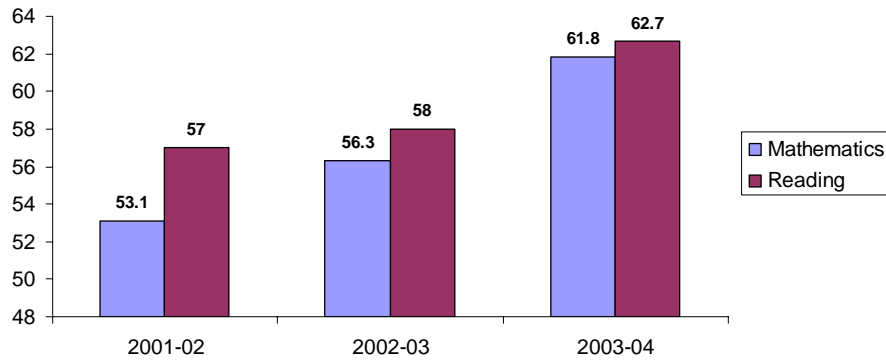
◆ PA School Enrollment



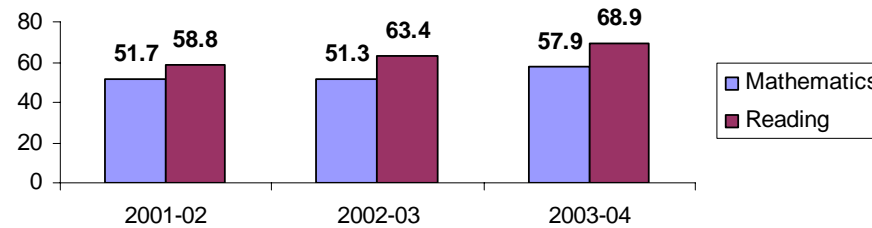
◆ Sp.Ed. % of Public School Enrollment

# Pennsylvania System of Student Assessment (PSSA) % Advanced and Proficient **ALL Students**

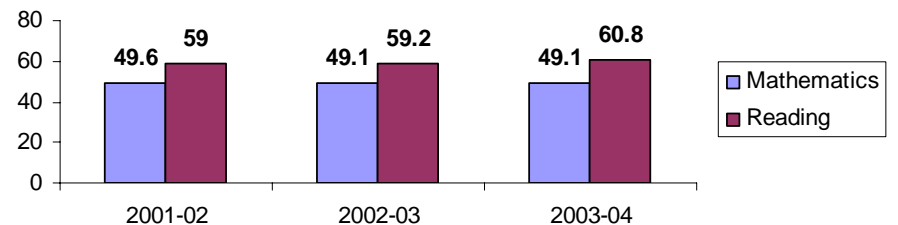
## Grade Five



## Grade Eight



## Grade Eleven

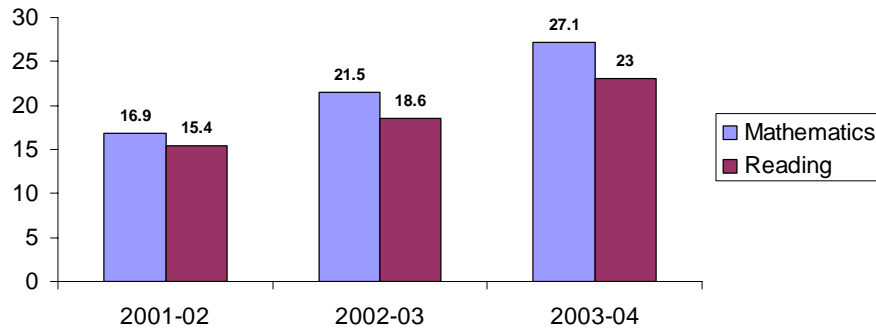


# Pennsylvania System of Student Assessment (PSSA)

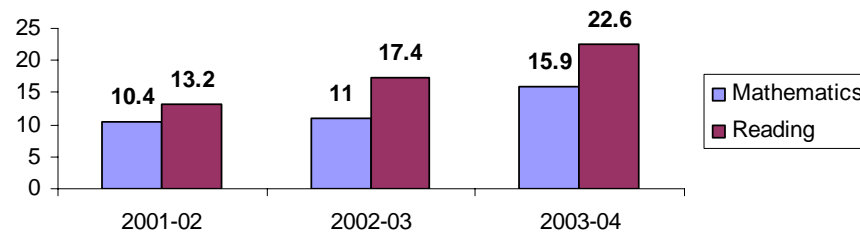
## % Advanced and Proficient

### Students with IEPs

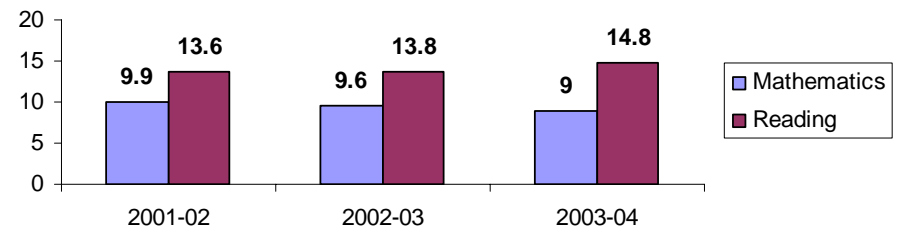
**Grade Five**



**Grade Eight**



**Grade Eleven**

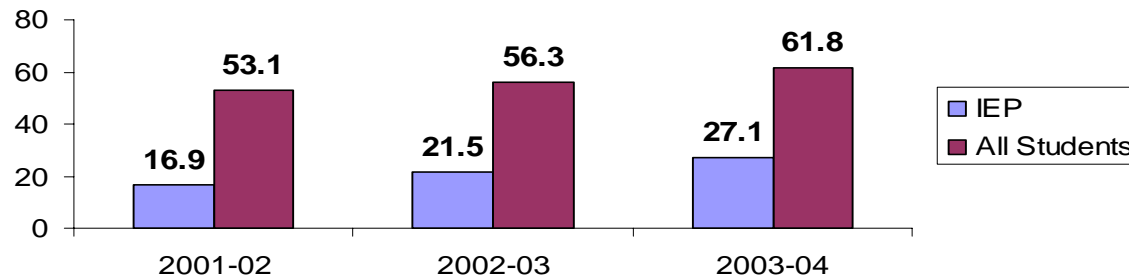


# Pennsylvania System of Student Assessment (PSSA)

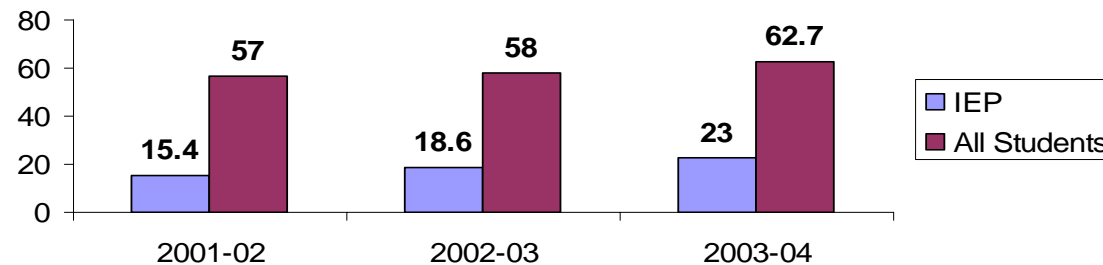
## % Advanced and Proficient

### ALL Students / Students with IEPs

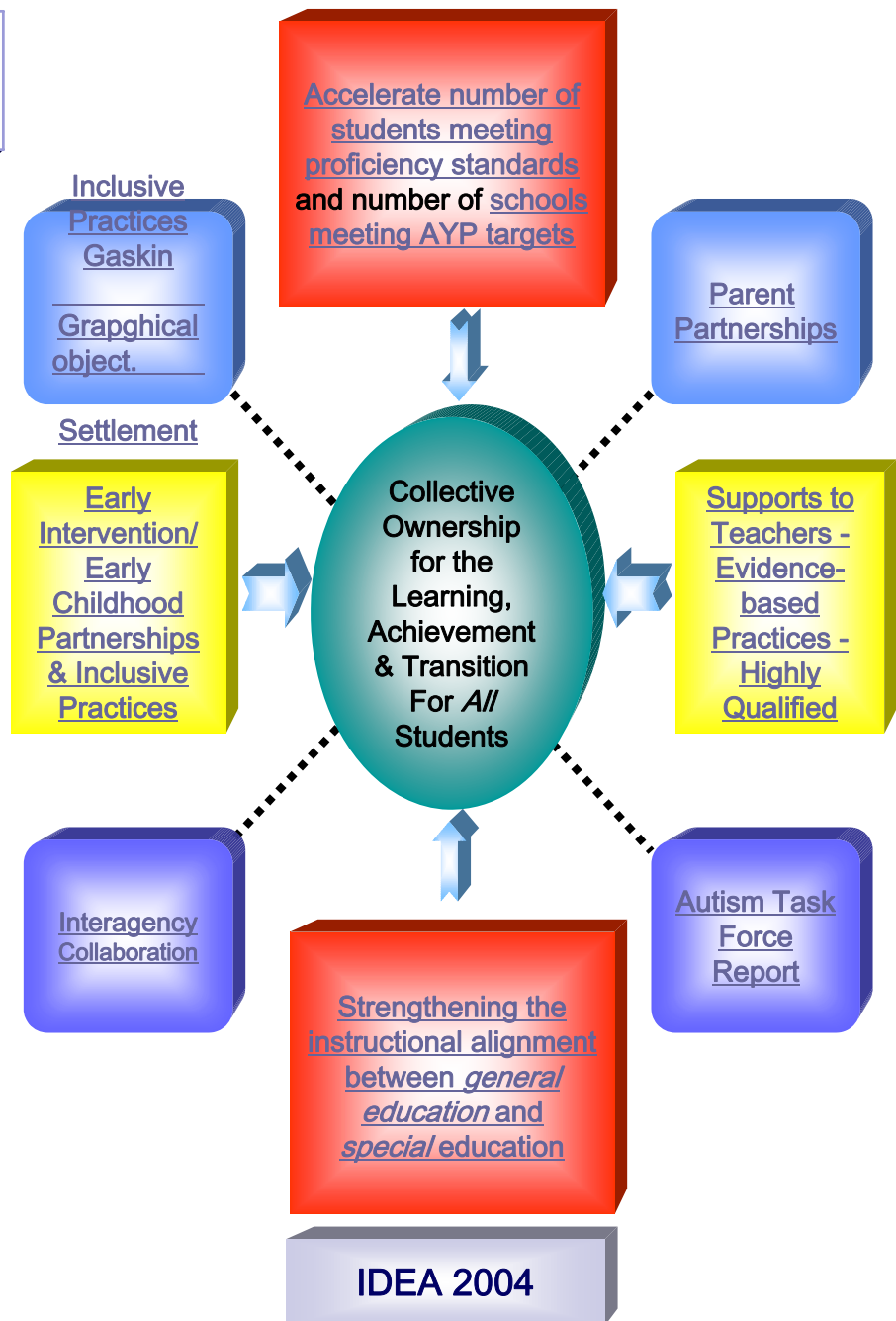
#### Grade Five - Mathematics



#### Grade Five - Reading



**PROPOSED  
2004 - 2007  
STRATEGIC PRIORITIES**



**Early Intervention and Special Education Funding**